

Independent
Living



Housing
with Care

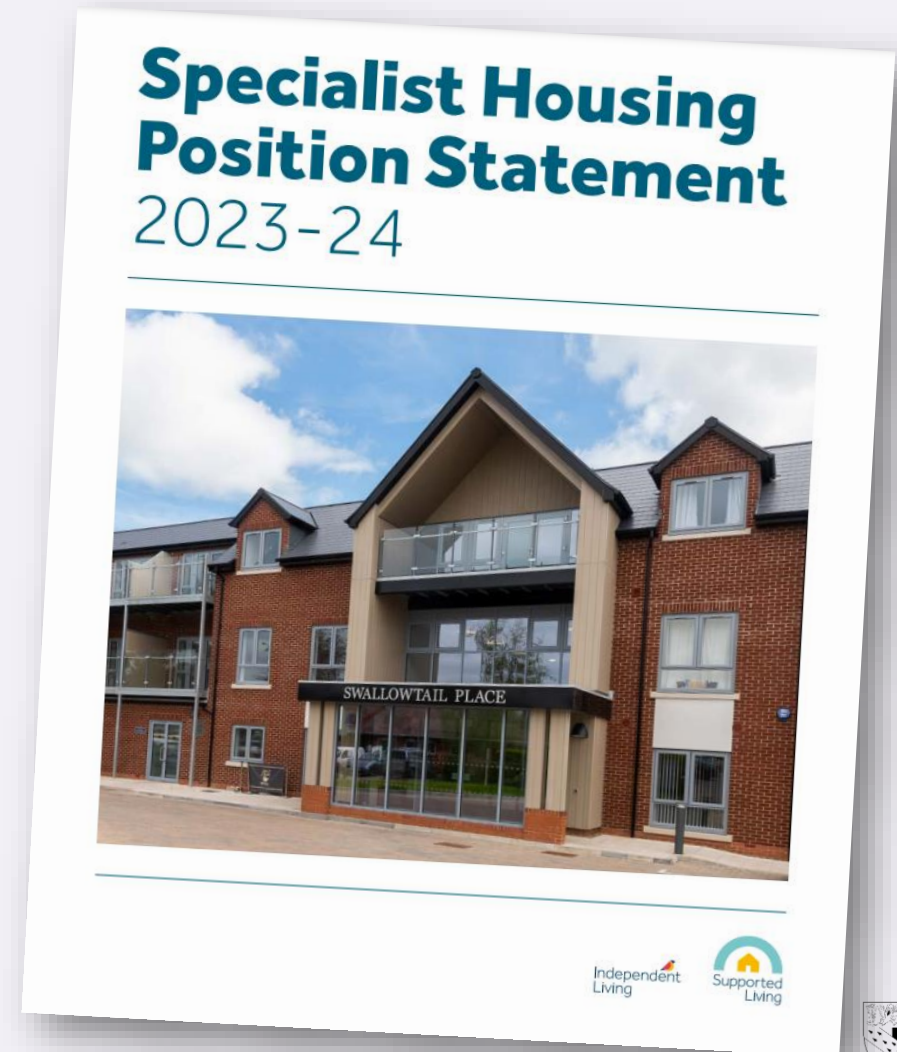
Norfolk Older People's Strategic Partnership

November 2023

Sera Hall – Assistant Director Housing and Capital Programme

Our Independent Living Capital Programme

- Norfolk County Council has committed £29m of capital funding to develop Independent Living schemes across Norfolk
- Norfolk County Council aims to facilitate over 1,000 units of affordable rental units of Independent Living by 2028.



What is Housing with Care & Independent Living?

Schemes are:

- Flats with a living area, kitchen, bedroom, bathroom that is your home to furnish and decorate
- For individuals or couples
- Your own home, with your own front door
- Peace of mind with on-site care

Generally, for:

- People aged 55 and over
- Minimum 4 hours care need (if a couple, only one person needs to have a care need)
- Priority given to local people

"I never knew something like this was available, it is great, and I love living here."

Housing that changes with your need

As older people's needs change, their housing requirements change. Independent Living and Housing with Care provide for continued independence. By offering care on site, it allows people to age in place as their needs change without the need for a care home.



"It's a beautiful place to live. You've got peace of mind here, but you've got all the independence you need"

Housing with Care & Independent Living

Fundamentally they are the same, with a few differences:

- Housing with Care schemes are established sites built before 2019. Independent Living schemes are built after 2019
- Housing with Care flats are only available to rent*. Independent Living flats are available to rent or to buy
- Care and Support charges are based on individual need for Independent Living, and a weekly standardised payment for Housing with Care



*Except for Green Lane View, Aylsham that has shared-ownership properties

Making a difference

John and Mary's story – Independent Living

- Norfolk born and bred
- Mary is a social butterfly whilst John prefers a quiet life at home
- Always been each other's rocks – and love to 'just be' together
- Previous home was getting difficult to manage

- John's mobility decreasing, Mary recognised she would need more support in caring role
- Wanted to be close to daughter who had become very ill
- First residents to move to Swallowtail Place when it opened

- Mary's interior design skills have made a beautiful modern home
- Mary is out and about most days, with peace of mind of carers being around for John
- John likes chatting and dancing in the kitchen with the carers
- Love the on-site café for nights when you can't face cooking

"I have got my freedom back. I can go out without worrying if John will be ok. We have never looked back!"

What needs can be met?

Low (30%)	Medium (30%)	High (40%)
4-8 hours	9-12 hours	13+ hours

Planned care

- Help with domestic and personal tasks

Unplanned care

- All residents will pay a 'well-being charge' which covers unplanned care – in the event of a fall or an emergency, someone will always be available to help

This means that everyone in the community has peace of mind about any unplanned care as well as the freedom to make their own choice of care provider for their personal care.

"I am so thankful that I could move here, my whole world has opened up!"

Cost of Independent Living

The cost of Independent Living is broken down into six parts:

- Renting or buying your home (including council tax)
- Service charge
- Peace of mind/wellbeing charge (24-hour emergency support)
- Care and support cost (based on your individual needs)
- Heating and water (if applicable)
- Meals (if applicable)

Current Independent Living schemes

Meadow Walk, Fakenham
Opened 2021



- 27 one-bed and 3 two-bed affordable apartments
- 36 two-bed shared-ownership apartments

Housing 21

Swallowtail Place, Acle
Opened 2022



- 38 one-bed and 3 two-bed affordable apartments
- 10 one-bed and 7 two-bed shared-ownership apartments

Saffron housing

Independent Living schemes coming soon

Harleston
Due to open 2026



- 75 one-bed and 16 two-bed affordable apartments
- 12 one-bed and 4 two-bed shared ownership bungalows

Will form part of a wider housing development by Saffron Housing

Hunstanton
Due to open 2025



- 61 housing care apartments
- 39 care ready bungalows
- 60 residential dwellings together

Development by Lovell Later Living

Housing with Care schemes

- Barley Court
- Benjamin Court
- Dell Rose Court
- Grays Fair Court
- Green Lane View
- Harriet Court
- Laburnum Grove
- Lisbon Court
- Lloyd Court
- Oakes Court
- Redmayne View
- Robert Kett Court
- Saxon House
- St Augustines
- The Lawns
- The Meadows
- The Old Maltings
- Weaves Court



See our website for information on each scheme!







How can I access this?

- Contact Norfolk County Council's Customer Service Centre and ask about Housing with Care or Independent Living.

- A callback takes place within 5 working days to discuss eligibility, process, scheme and costs

- Allocated social work team complete assessment to confirm eligibility, request a financial assessment and manage case

- Process of moving house and arranging care and support plan begins



- A call is logged on the Adult Social Care system and assigned to the dedicated Housing with Care and Independent Living Support Officers

- Support Officers help to contact the District Council and Landlord
- Case is assigned to the relevant social work team

- Monthly panel with Norfolk County Council, District Council, Housing Provider and Care Provider make decision and communicate back through allocated worker.

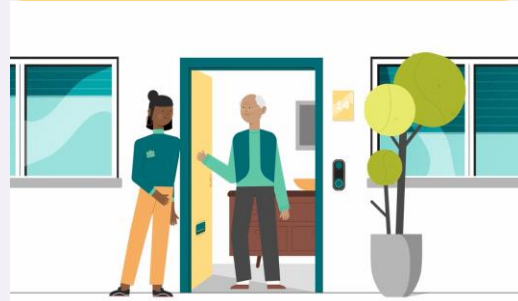
What information is available?

- Housing with Care and Independent Living pages
- Social media
- Educational videos
- Public campaigns

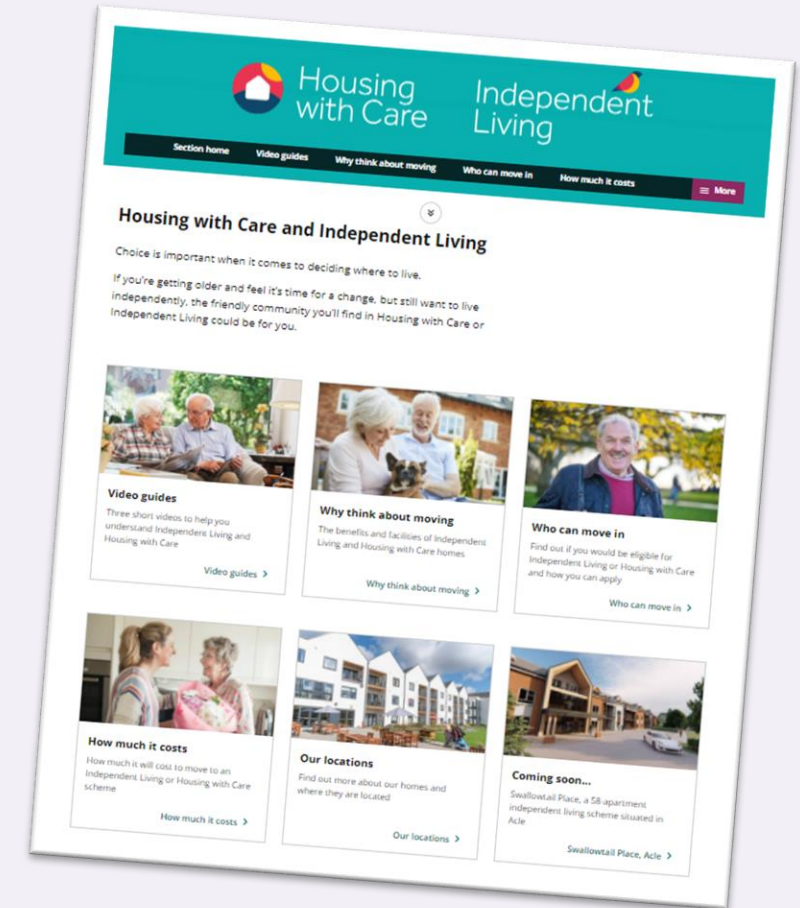
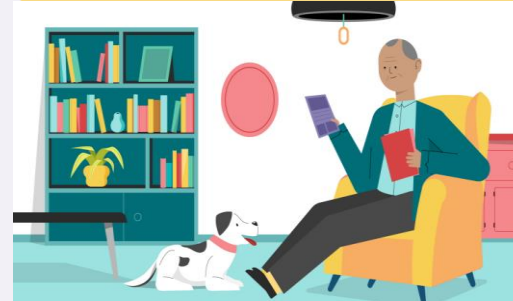
1. Older people have choice when deciding where to live...



2. Housing with Care and Independent Living are two great options...



3. Giving people a simple overview about how you get in the door!



What information will be available?

- Case study videos
- Specialist Housing eLearning package
- Continuing public campaigns
- Promotion of new schemes
- And much more!



“I have the freedom to run my life how I want to run my life. I have always been independent, and I feel free living here”